

# Gunthorpe Newsletter

October 2010

[gunthorpenews@btinternet.com](mailto:gunthorpenews@btinternet.com)

Tel 0115 9664193

## Wind Turbine for Gunthorpe?

Since 2009 British Waterways has been working with Partnerships for Renewables (PFR) to explore the potential for renewable energy projects on waterways' land nationally. As part of this work PFR will now begin investigating land near to the River Trent, north of Gunthorpe Lock as a potential location for a wind energy project.

Initial research suggests that the site could potentially host a single 1.5 Megawatt turbine with a maximum tip height of 125m (the combined height of the tower and blades). Investigation work is at a very early stage, with the first detailed studies of the site, including ornithology and wind speed investigations, due to begin shortly.

Regional Manager for Partnerships for Renewables, Tony Duffin, said: "We are committed to only developing renewable energy projects in appropriate locations. If results of our environmental and technical studies show that the site is inappropriate we will stop the development process.

"No decision has yet been taken as to whether the site is an appropriate location for the development of a wind energy project. If the initial results of environmental and technical studies are encouraging then we would anticipate that a period of 12 months would be necessary to complete the investigations and assess the site's suitability. Therefore the earliest date we would expect to submit a

planning application for a turbine at the site would be the autumn of 2011.

"We want to ensure that the local community is central to our development work and hope to begin a dialogue by holding a public exhibition to introduce the proposal and the project team to the local community.

"As a part of our early investigations of the site we plan to submit a planning application for permission to erect a temporary wind monitoring mast at the site to Newark & Sherwood District Council shortly. This 70m mast would help to record accurate data to find out whether the wind conditions at the site are suitable.

"Anyone seeking further information on our work can contact the project team by e-mailing [pfr@communityrelations.co.uk](mailto:pfr@communityrelations.co.uk) or calling 0800 731 7395."

The public exhibition planned by PFR is due to be held at

**Gunthorpe Village Hall on Friday 19<sup>th</sup> November 2010 from 12 midday to 7.00pm,**

The project team will be on hand to provide further information on their studies and discuss ideas for future development work with the local community.

Published: 14/10/2010 on the Partnerships for Renewables Web site

## THE GREENING CAMPAIGN

## Newsletter

The Parish Council have been asked to enlist residents' support for 'The Greening Campaign'. The Campaign's originator, Terena Plowright visited the Parish Council at their September meeting to introduce and discuss The Green Campaign.

The Campaign started when Terena's local community in Hampshire decided to look at energy efficiency to lessen the effects of global warming. Resulting from her involvement Terena realised that everyone in the community saving just a few pennies is far preferable than a limited number saving a lot! The Campaign may be run through several stages, but Phase I is the most important to engage the community!

**Phase 1 involves giving** each household a card with a logo on.

On the reverse of the card is a list of 8 very simple things for each household to commit to, these are discussed and determined by public meeting (eg insulate loft and/or turn off

lights). When 5 things have been done, the 'logo card' goes in the front window of the house. The cards are counted after the agreed number of weeks. The results are quantifiable, so the amount of CO<sub>2</sub> jointly saved is celebrated. The resulting structure and support allows the community to be in a strong enough position to move to Phase 2.

The campaign was run in Petersfield and was a success with shops, businesses and the community taking part. Once they heard of it, neighbouring Parishes, towns have since taken up the campaign. South Harting has been very successful and others can be viewed on the website. It has now moved into many counties across England as more and more communities take control of their future. Local participating communities include: Kinoulton, West Bridgford, Harby and Radcliffe.

There will be a meeting of the Village Plan Committee to consider the proposal further.

It has been a long time since the last newsletter, mainly because the editor for the past few years has found it very difficult to manage his time between work, family, hobbies and voluntary work.

The Parish council are acutely aware that the newsletter provides a valuable service and want it to continue. They also realise that to expect a person to write and edit a newsletter without some payment is no longer a realistic option.

The Parish Council have therefore agreed to set aside a nominal amount of money to pay for the collection of news items, editing, printing and distribution of a bi-monthly newsletter.

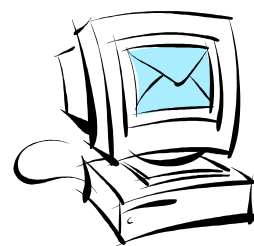
If you would be interested in providing this service please contact Lesley Jeffery on 0115 9664193 in the evening or by e-mail to [lesleyjeffery@btinternet.com](mailto:lesleyjeffery@btinternet.com)

## The Race to Infinity

You might already know about this, but in case you don't, BT is running a competition called "The Race to Infinity" to see which will be the next telephone exchange to be converted to their new superfast broadband, called "Infinity". It's dead simple for anyone within the Lowdham exchange catchment to register their vote.

The link to the Race to Infinity web site is:

<http://www.racetoinfinity.bt.com/home>



## Threat to Village Hall and Playing Fields

It's always very difficult to judge whether community volunteering is hampered by those people, already in such voluntary positions holding on, or whether those in voluntary positions find themselves trapped by a perceived lack of volunteers to take their place.

Well in the not too distant future this question will be put to the test but with potential detriment to the Parish. The possibility of losing the village hall, pavilion and playing field is at stake..

The Village Hall Committee abides by a constitution set within the original conveyance document for the playing field and where the Village Hall and Pavilion are now sited.

If a Village Hall Committee cannot be elected by the residents of Gunthorpe at the AGM then the Parish Council are obliged to hold a special meeting of the Parish in another attempt to elect a Village Hall Committee. If that also fails the land has to be donated to the Charity Commission. Presumably to do with as they feel fit.

The AGM is not until May 2011 but we already know that the Chairperson, Secretary and Treasurer are to retire after many years of service. Where their replacements will come from is uncertain.

The Village Hall Committee plan to hold a special Village Hall meeting where people from the Parish can go and experience some of the activities the Village Hall has to offer.

Regular users of the hall are being asked to be there and demonstrate how they use the hall and also the hall's potential use. There will be various displays to browse and people to meet.

It will be very informal. Free wine, soft drinks and some snacks will be provided.

There will also be some musical entertainment. People who would like to know more about helping the community by volunteering their time will have the opportunity to talk with Village Hall Committee members, Parish Councillors, and members of the various clubs and organisations that use the hall.

The Open Evening will be held on Wednesday 3<sup>rd</sup> November in the Village Hall. From 7.30pm until 9.30pm.

Please make every effort to attend. Let's not give away so easily what our predecessors strived so very hard to establish.

Have you any special memories of Gunthorpe Village Hall. Have you been to parties, concerts or celebrations there? Are you or have you been a member of any of the groups that use the Village Hall or playing field?

Gunthorpe Village Hall Committee are appealing for stories, memorabilia and photographs to display at the Village Hall.

Have you anything of interest? The Committee are particularly eager to show some of the historic events that have taken place in the Hall. Have you any items from weddings and other celebrations, commercial events, arts and crafts, sports and recreation?

If so the Committee would be delighted to hear from you.

The contributions will form part of a display for people to look at and reminisce and also to see the many varied uses the Hall can be put too.

Please contact Trish Greggs on 0115 9663317, or any other member of the committee. Or e-mail

[gunthorpevillagehall@btinternet.com](mailto:gunthorpevillagehall@btinternet.com)

The Village Hall is used by the following organisations who would welcome members and volunteers. Please give every consideration to having a go.

### **Mondays**

7pm - 8pm - **Yoga For the more able and experienced** Contact: Rachael Hemmings 01949 836967

### **Tuesdays**

6pm - 7.30pm (Term Time) **Brownie Guides**  
Contact: Sally Johnson 0115 9664864

7.30pm - 9pm (Term time) **Guides**.Contact:  
Beryl Paddison 01949 839926

### **Wednesdays**

11.15am - 12.15pm - **Yoga For beginners and maturer people**. Contact: Rachael Hemmings 01949 836967

6pm - 7pm - **Kick Boxing. Young and Old**  
Contact: Neil Smithyman 01623 468155

### **Thursdays**

2pm - 4pm - **Social Group. Come and have a game of cards, and a chat over tea and biscuits** Contact: Roger Heathcote 0115 9664396

5.45pm - 7pm - **Keep Fit (Term Times)**.  
Contact: Joy Knight 0115 8478925

## **HIGHWAYS & TRAFFIC MATTERS**

Members of the Parish Council held a meeting with Carl Whitley from Notts County Council Highways, on a variety of concerns regarding the state of highways within the Parish.

The matters raised along with Mr Whitley's response are reproduced:-

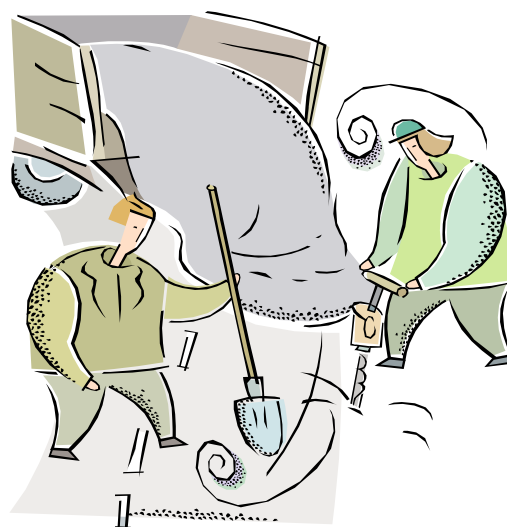
1. The profusion of badly-placed yellow lines on the slope road - a report was first submitted to Highways in June 2008.

Reply: The Highway Manager, Alan Birt has been out to site and is arranging for a solution. I know that we are currently waiting on an indication from our Operations section for a time-scale. This kind of work is generally weather dependant, so I don't really want to be quoted on a timescale for the works.

2 Cracks in road and general road condition

Reply: I have asked that the Highways Inspector carries out an informal visual inspection to monitor the condition of the road. If there is anything that meets intervention criteria, then it will be repaired as any other highway defect would. As pointed out on site, there appear to be no cracks as a result of any kind of subsidence/loss of integrity of the supporting earth. Where the carriageway appears to have 'cracks' in it, these are along previous trenches that have been excavated and reinstated by previous statutory undertakers. These pose no threat to the road.

3 Deterioration of 'underpinning' on both sides



Reply: I have asked that NCC's structures team provide some advice regarding any potential subsidence of the slip road. I am awaiting feedback from them and when I have sufficient information, I will respond to you.

4 The road is too narrow - this has led to various problems with vehicles, especially busses, travelling in opposite directions. The Parish Council is in the process of opening the possibility of one-way traffic and a weight limit to public debate in the village. The complete implementation of both these proposals will be a lengthy and probably difficult process, but the Parish Council certainly intend to pursue.

Reply: At present there are no plans to introduce a weight limit in the area. Any new Traffic Regulation Order must be investigated fully and comprehensive site surveys must be carried out. Unfortunately, this takes quite some time to collate the necessary information. Once this data has been collected and investigated, I will contact you with our findings.

A one way order will only serve to increase traffic speeds along the road, which will either lead to faster traffic entering Gunthorpe or faster traffic approaching a busy road. For this reason, I cannot accede to this request. Due to the nature of the road, it is impossible to widen it without significant expense and land acquisition, which due to emerging budgetary pressures; the County Council is not in a position to do. In highway construction, the load of a vehicle is dispersed across the road, rather than straight down; therefore any road widening would need a wider embankment.

5 Vegetation overgrowing road - this Cllr Platten has, with assistance, done

Reply: The area of embankment up to the new conifer type hedge (at the bottom of the road) is owned by Nottinghamshire County Council. I am currently speaking with the tree maintenance section to find out what they maintain there. I will report my findings as soon as I can. However, I do appreciate the work that has been carried out thus far.

6 The school sign in a garden on Main Street to the north of David's Lane is ambiguous and too far from the junction.

Reply: I will raise this issue with the Road Safety section and the Highway Improvements section and report back with my findings.

7 The Parish Council has requested 'Slow' signs and a change in the tar colour where the Trentside road narrows.

Reply: These works are only carried out as part of a casualty reduction scheme. SLOW markings on the carriageway should only be placed next to existing or planned warning signage (as per the Traffic Signage Regulations and General Directions 2002; the legislation that covers road signage).

8 Nottinghamshire County Council agreed in 2008 to provide a replacement bus shelter on Main Street. The type of shelter and its location were agreed. A few months later NCC confirmed that the shelter would be installed, but were unable to give a date.

Reply: If you could respond to me with the bus shelter concerns, I will pass them to the relevant officer in the Passenger Transport Section.

9 Rubbish / litter and vegetation in the ditches alongside the A6097.

Reply: I have passed this on to the highways inspector for the area. He monitors the ditches on a regular basis.

10 Advertising hoardings have been illegally erected at both ends of the village on more than one occasion and are still there despite several request for their removal. His response to the matters raised

No reply received.